



T5.5L

Ref.



140222

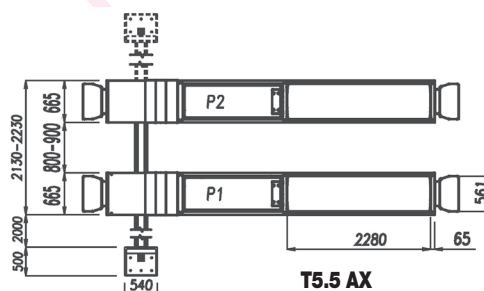
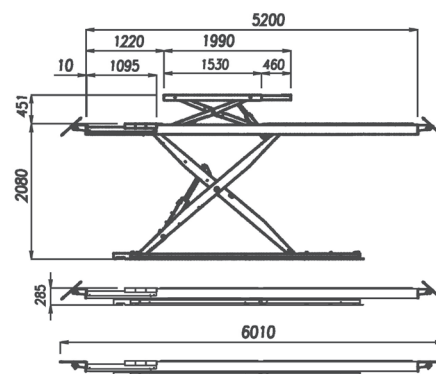
5.500 Kg

2.560-2.660Kg.

3PH 400/230V- 3Kw 50Hz
1PH 230V-2,2Kw 50 Hz



5200 mm x 660 mm x 285 mm



T5.5 AX



Ref. 14987F

Inground
version.



T4: Ref. 14950C

T5.5: Ref. 14950C + 14970F

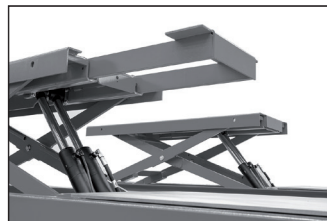
Onground lift with surface
ramps.

Ref. 140222

PLATFORM SCISSORS LIFTS **T5.5L**



Lift and built in lifting table with double hydraulic circuit
(2 masters + 2 slaves). Hydraulic security .



Extending lift table.



Repairable during at least 10 years.

We ensure spare parts availability during at least this period.



Includes manual descend pump, regulator of the pneumatic pressure and water filter separator.



Very solid structure and base "solid profiles".



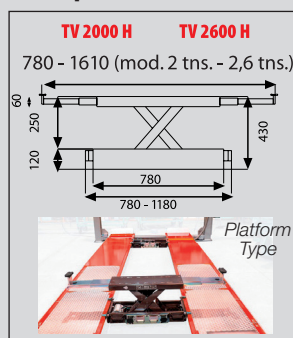
Reinforce base of the lift -150 kg.- equipped with **16 regulation points.**



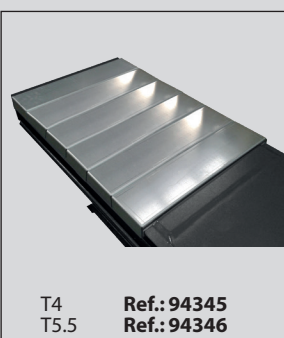
Includes sliding guide for Jacking Beams.

Accessories

Oleopneumatic Jacks

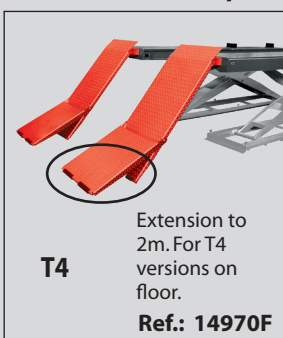


Recess infills kit



T4 Ref.: 94345
T5.5 Ref.: 94346

Extension ramp

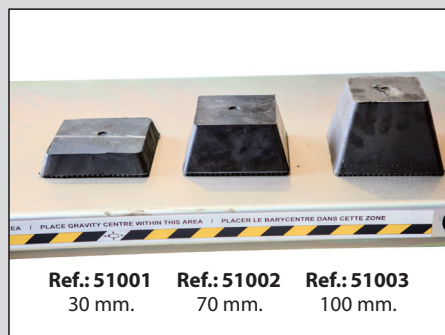


T4 Extension to 2m. For T4 versions on floor.
Ref.: 14970F

Lightning kit

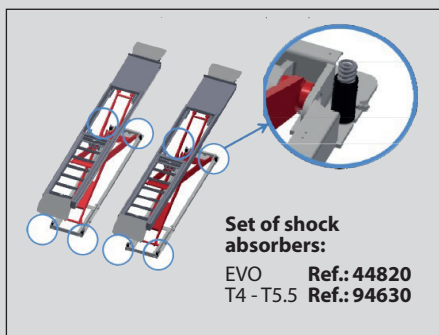


Rubber pads



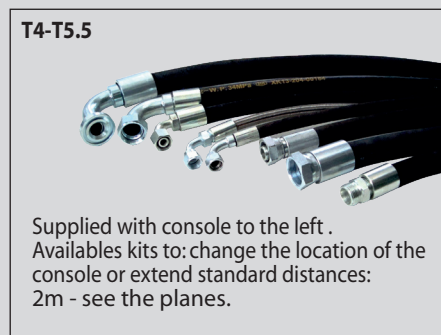
Ref.: 51001 30 mm. Ref.: 51002 70 mm. Ref.: 51003 100 mm.

Set of shock absorbers



Set of shock absorbers:
EVO Ref.: 44820
T4 - T5.5 Ref.: 94630

Hose kit



www.cascos.es



CASCOS

CASCOS MAQUINARIA, S.A.

Zurrupitieta, 8 - Pol. Ind. Jándiz • Apartado 264
01015 VITORIA-GASTEIZ / España/Spain
Tel. +34 945 290 294 / Fax +34 945 290 055
e-mail: info@cascos.es